

# P3s Come In All Shapes And Sizes

**Mr. Greg Slater, Administrator**

## **Customer-Driven...Customer First**

### **TODAY'S DISCUSSION**

- Introduction to MDOT
- MDOT P3 Experience
- Full Delivery Stream Restoration
- I-495 & I-270 P3 Program

# TRANSPORTATION IN MARYLAND

## About Us



- ★ Ranked **19<sup>th</sup>** in Population (5.8 million, 2010)
- ★ Ranked **5<sup>th</sup>** in Population Density
- ★ By 2040, Maryland will have **1.1 million** more people, and **0.4 million** more jobs

### WHAT IS HAPPENING?

Growing population, households, jobs, & Vehicle miles of travel & hours of travel

### WHAT IS MDOT SHA DOING?

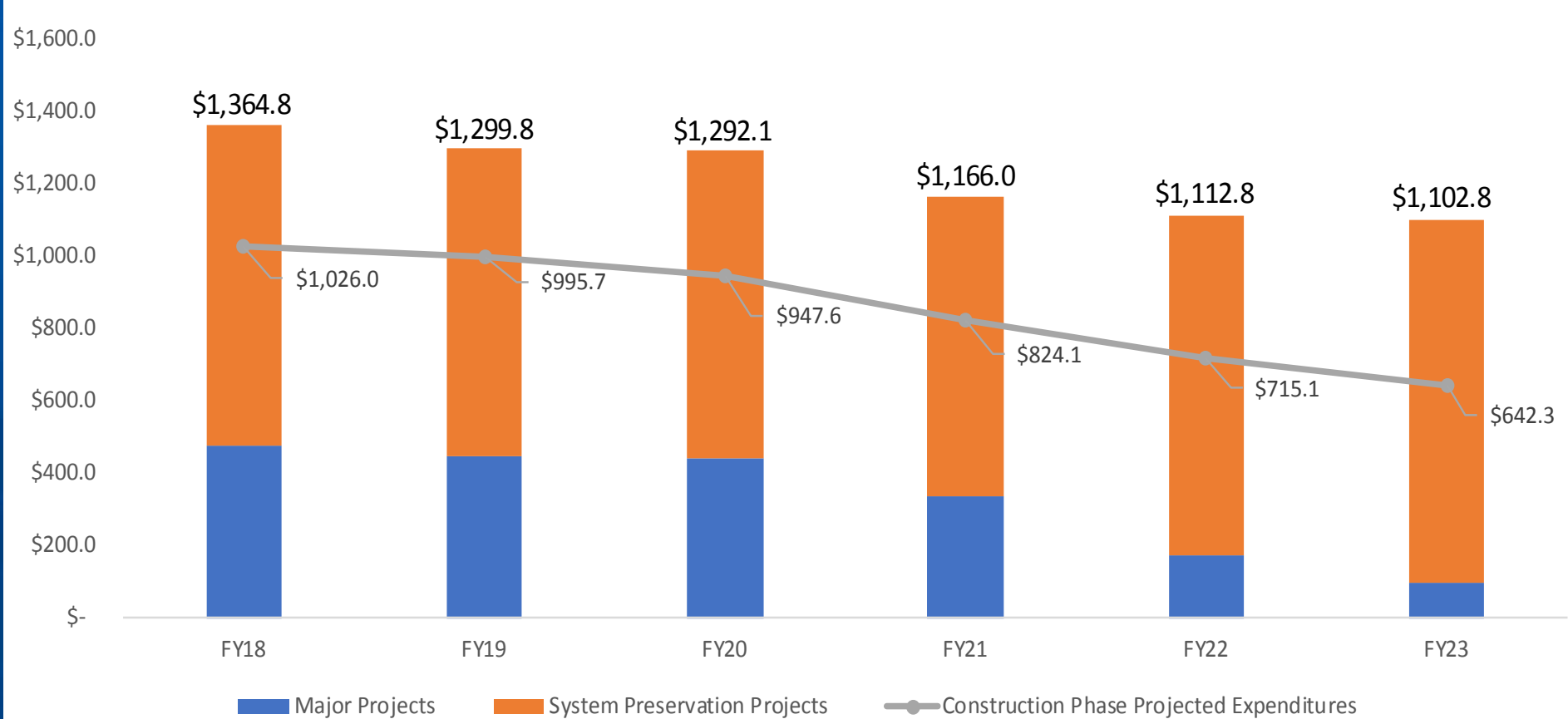
Improving urban streets designs, corridor reliability, & multi-modal connections

### WHAT IS THE OUTCOME?

Increased safety, mobility, & opportunity

# TRANSPORTATION IN MARYLAND

## CTP Major Projects & System Preservation Program Allocations with Projected Construction Expenditures FY 2018 - 2023



# MDOT P3 Activity

## Completed P3s:

- I-95 Travel Plazas (MDTA)
- Seagirt Marine Terminal (MPA)

## P3s Underway:

- Purple Line (MTA)

## Pursuing P3 designation:

- Corridor Cities Transitway (MTA)
- I-495 & I-270 Corridors (SHA)

# I-95 Travel Plazas

MDTA entered into a 35-year lease with Areas USA for the Travel Plazas on I-95 in Harford and Cecil Counties in 2012 to:

- Design, Build, Finance, Operate and Maintain (DBFOM)
- \$56 million reconstruction project
- 2014 opened, providing a positive customer experience
- LEED Certified
- EV Charging Station



# Seagirt Marine Terminal

Maryland Port Authority entered into a P3 with Ports America Chesapeake in 2010 to:

- Construct 50-foot deep berth, and 4 new all-electric Super Post Panamax cranes
- \$105 million project completed in 2012, 2 years ahead of schedule
- Cargo increased 43.9% (2010-2016)
- Expansion on adjacent 70 acres



## P-3 To Restore the Chesapeake Bay

By 2020, MDOT SHA is charged with removing 76 acres of excess pavement, upgrading 13 stormwater outfalls and constructing 1,780 stormwater treatment facilities. Other Chesapeake Bay restoration efforts require lane and include:

Restoring 62,513 linear feet of streams

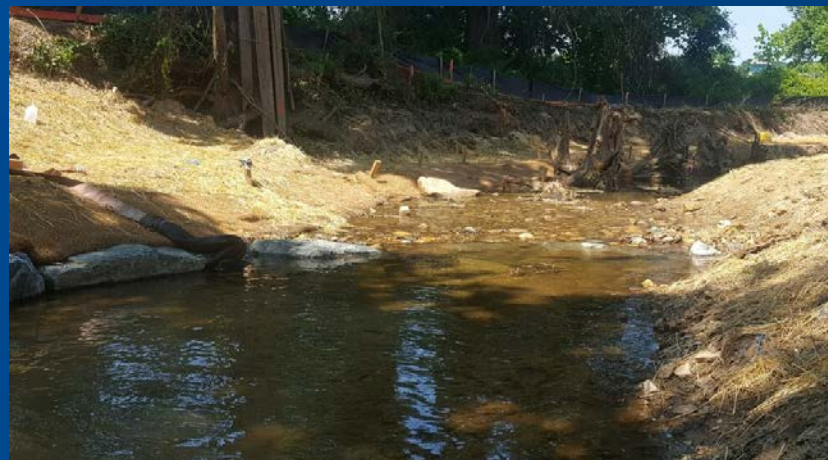
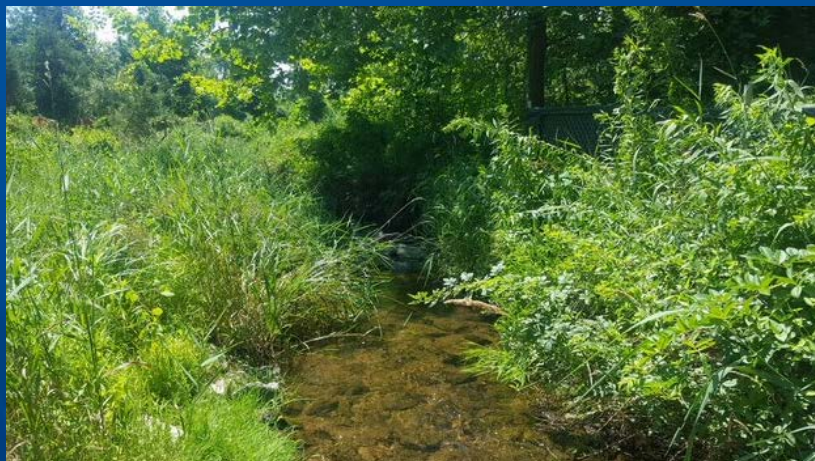
Planting nearly 800,000 trees.

MDOT SHA has limited right-of-way to perform these tasks, so an effort to include private property owners to acquire land partnerships to accomplish Chesapeake Bay restoration goals.



# Gramies Run Stream Restoration Project

MDOT SHA Partnered with a private property owner in Cecil County, MD to restore a five-acre area that feeds the Elk River that empties into the headwaters of the Chesapeake Bay.



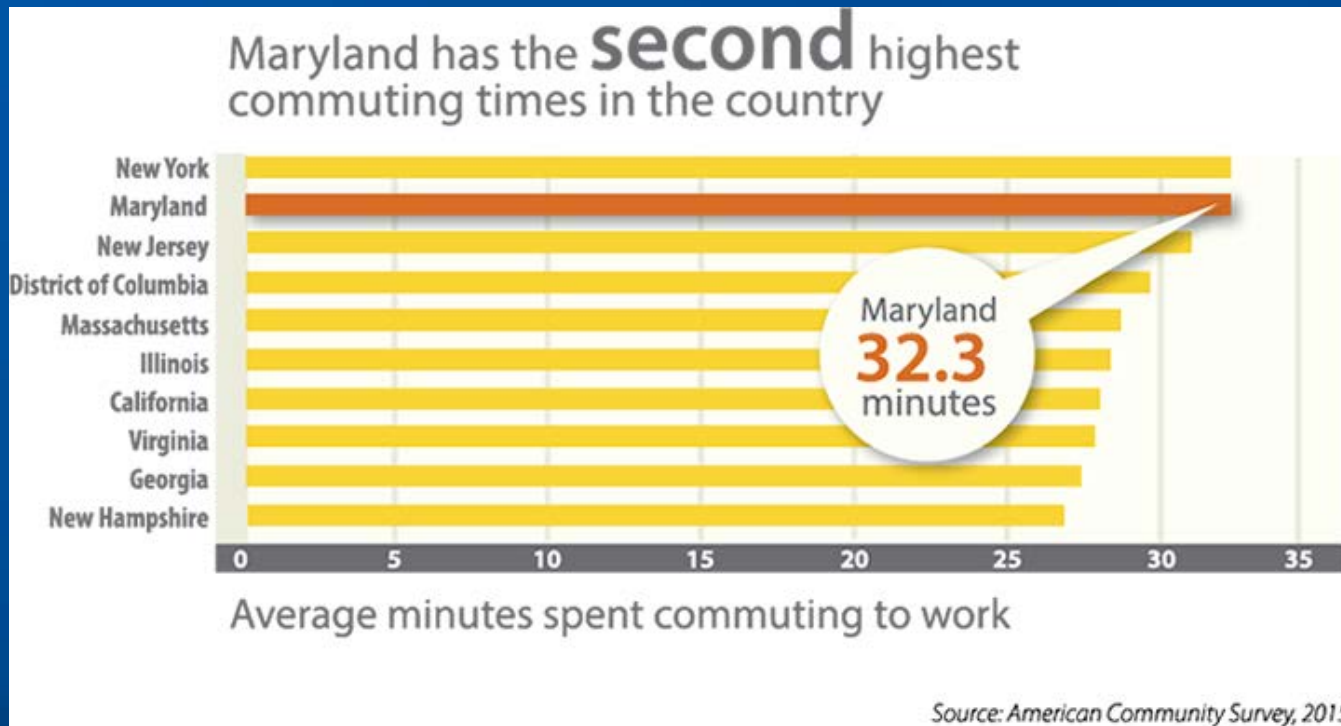
The Gramies Run stream restoration project –Started late-2017/Complete spring 2019

## Overview

Innovative approach to partner with private sector to meet Chesapeake Bay Restoration requirements:

- Multi-award procurement
- Allows single offeror to propose multiple, independent projects
- Offeror sets Unit Price per “Credit”
  - Credit is defined by linear feet of existing stream restored inclusive of land acquisition, design, construction, monitoring, and adaptive management
- Projects may be along a spectrum of development stages – Previously Restored to New Construction
- Pay for Performance
  - Incremental payment on Milestone Schedule – Tied to Permits, easements, construction completion, as-builts, and 5 years of monitoring
- Awarded +/-150,000 Linear Feet of stream restoration – 20 projects to 5 different offerors at total award value of +/- \$70 M

# Maryland's Congestion Challenge



- Congestion limits economic growth and diminishes the quality of life
- 2<sup>nd</sup> longest commuting times in the nation
- \$2.05 B annual cost of congestion

# Purple Line

MTA entered into a P3 with Purple Line Transit Partners in 2016 to:

- DBFOM a \$6.2B 16-mile Light Rail Transit line to improve connectivity with AMTRAK, MARC and DC Transit
- Currently under construction
- Completion Date anticipated 2022



# Maryland's Congestion Problem

The National Capital Region is the most congested region in the nation based on annual delay and congestion per auto commuter.

I-270, I-495, and MD 295 are among the most congested corridors in Maryland



# Maryland's Congestion Problem

## I-495 & I-270 Corridors



I-495 carries more than **240,000** people and is congested **10 hours** per day



I-270 carries more than **260,000** people and is congested **7 hours** per day

# The I-495 & I-270 P3 Program

**I-495** from south of the American Legion Bridge in Virginia to east of the Woodrow Wilson Bridge, and

**I-270** from I-495 split to I-70

Over 70 centerline miles of roadway



# P3 Goals for Success

**Traffic Relief** – Provide solutions to reduce delay and improve predictability for trips on I-495 and I-270;

**Financing** – No net state contribution over totality of agreements;

**Acceleration** – Provide improvements faster to users;

**Innovation** – Flexibility to encourage innovation of private sector to minimize impacts (right-of-way, environment, maintenance of traffic, etc.).



# TRANSPORTATION IN MARYLAND

## Greg Slater

Administrator

Maryland Department of Transportation

State Highway Administration

*707 North Calvert Street*

*Baltimore, Maryland 21202*

[Gslater@sha.state.md.us](mailto:Gslater@sha.state.md.us)